



FC139

**ST AUBIN TOWNHOUSE LA TOUR, LA RUE DU
CROCQUET, ST. BRELADE, JERSEY, CHANNEL
ISLANDS JE2 8R7**

Asking Price

£1,995,000

FINE & COUNTRY
JERSEY

Property details

FLYING FREEHOLD - Situated on the charming cobbled high street of St. Aubin in the island's southwest, this impressive four-storey residence features a striking columned façade.

The upper reception rooms and large sun terrace, accessible from the sitting room, offer stunning panoramic views over the scenic harbour, the fort, and the expansive St. Aubin's Bay. This four-bedroom home is a true gem.

The ground floor provides a guest bedroom suite and convenient laundry facilities. On the first floor, you'll find two en suite bedrooms, one with access to a rear terrace. The second floor boasts a spacious kitchen/diner with bay views and a main bedroom suite with bifold doors opening to the rear garden.

The top floor is dedicated to a large sitting room with southern exposure and doors leading to a generous balcony, ideal for entertaining and taking in the magnificent views over the bay and harbour.

The property also includes secure parking for two cars.

Just a short walk down the high street brings you to the heart of St. Aubin Village, where you can enjoy a variety of restaurants and cafes around the harbour or stroll along the picturesque promenade stretching the length of the bay. For swimming and water sports enthusiasts, the beach and its facilities are nearby.

Perfect for a family with young adults, this property offers a prime location in the western part of the island, close to the sea, beach, and a frequent bus route.

Outside

Large sun terrace accessed from the lounge with spectacular views over St Aubin's Bay and harbour.

Rear courtyard.

Parking

Services

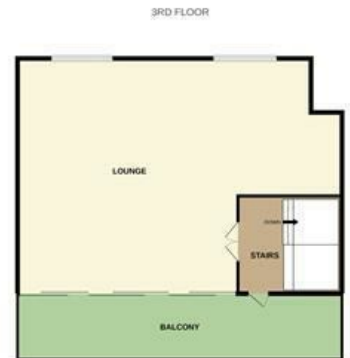
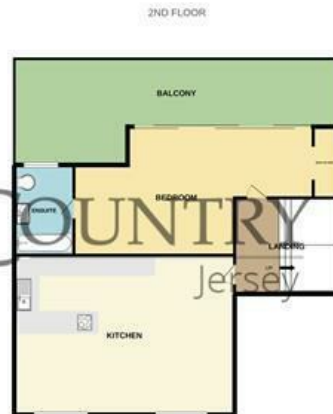
All mains & electric underfloor heating

Directions

Driving down St Aubin's High Street, La Tour development is located half way down on the right hand side.







FINE & COUNTRY
Jersey

Whilst every attempt has been made to ensure the accuracy of the floorplan contained here, measurements of doors, windows, rooms and any other items are approximate and no responsibility is taken for any error, omission or mis-statement. This plan is for illustrative purposes only and should be used as such by any prospective purchaser. The services, systems and appliances shown have not been tested and no guarantee as to their operability or efficiency can be given.
Made with Metropix ©2020

Call us on

01534 888855

jersey@fineandcountry.com

www.fineandcountry.je

5 King Street, St Helier, Jersey, JE2 4WF

MONEY LAUNDERING REGULATION - Once an offer is accepted and negotiations for the purchase of a property are entered into, the prospective purchasers will be asked to produce photographic identification and proof of residency documentation, e.g. current utility bill and ID. This is in order for us to comply with the current Money Laundering Legislation.

Fine & Country Jersey advises prospective purchasers that we have prepared these sales particulars as a general guide only. We have not carried out a detailed survey, nor tested the services, appliances and specified fittings. Room sizes are approximate and rounded; they are taken between internal wall surfaces and therefore include cupboards/shelves etc, accordingly they should not be relied upon when purchasing fittings. Carpet, curtains/blinds and kitchen equipment, whether fitted or not, are deemed to be removable by the vendor unless specifically itemised within these particulars and/or within the property inventory. These particulars are supplied on the understanding that all negotiations are conducted through Fine & Country Jersey, their accuracy is not guaranteed nor do they form part of any contract.

FINE & COUNTRY
JERSEY